



Dependable Products From People You Trust



HTHP Consistometer

**Model 100 (25,000 PSI, 400°F):
120-00 (Single Cell) / 120-05 (Dual Cell)**

**Model 120 (40,000 PSI, 600°F):
120-10 (Single Cell) / 120-15 (Dual Cell)**

Instruction Manual

**Updated 11/15/2011
Ver. 2.3**

OFI Testing Equipment, Inc.

*11302 Steeplecrest Dr. · Houston, Texas · 77065 · U.S.A.
Tele: 832.320.7300 · Fax: 713.880.9886 · www.ofite.com*

©Copyright OFITE 2011

Table of Contents

Intro	2
Description	2
Features	2
Requirements	2
Specifications	3
Components	4
Setup	8
<i>Consistometer</i>	8
<i>Chart Recorder</i>	10
<i>Pressure Indicator</i>	14
<i>Temperature Controller</i>	15
<i>Potentiometer Indicator</i>	17
Operation	18
<i>Filling the Slurry Cup</i>	18
<i>Loading the Test Cell</i>	20
<i>Completing the Test</i>	23
Maintenance	24
<i>Cleaning</i>	24
<i>Potentiometer Calibration</i>	26
<i>Potentiometer</i>	28
<i>Troubleshooting</i>	30
Appendix	33
<i>Cell Diagram</i>	33
<i>Slurry Cup Diagram</i>	34
<i>Plumbing Diagram</i>	36

Intro

During cementing operations, the time required for a cement slurry to set is of primary concern. Under an ideal situation, minimal time would be required to successfully pump the slurry, which immediately upon placement, begins to develop compressive strength. However, if insufficient time is allowed to fully pump the cement, it will be necessary to drill the cement remaining in the casing string. Remedial operations such as this are very costly. Conversely, cements that are successfully placed, but require considerable time to cure, consume valuable rig time, which is also quite costly. Laboratory tests should be conducted under simulated reservoir conditions to examine the actual thickening time of the slurry. The OFITE HTHP Consistometer was specifically engineered to determine the thickening time of well cements under simulated downhole pressures and temperatures.

Description

A cement is mixed and poured into the slurry cup assembly. The slurry cup is placed into the test vessel and pressure is increased via an air-driven hydraulic pump. A PID temperature controller governs an internal heater, which maintains the necessary temperature profile, while a magnetic drive mechanism rotates the slurry cup assembly at 150 RPM. A potentiometer controls an output voltage, which is directly proportional to the amount of torque the cement exerts upon an API-approved paddle. A chart recorder registers cement consistency and temperature as a function of time. Temperature and consistency are digitally displayed via LED indicators.

Features

- Pressure generated via an air-driven hydraulic pump
- Drive table is rotated with a magnetic drive
- External cooling jacket aids cooling of test cell
- Electronic timer with alarm, elapsed 0.1 minute resolution
- Deadweight calibration unit included
- Temperature, pressure, and consistency alarms provide automatic shutdown
- Safety head with rupture disk are provided
- Unit is fully capable of testing cements in strict accordance to the guidelines as stated in API Specification 10

Requirements

- Air/Nitrogen Supply (100 - 150 PSI / 690 - 1,035 kPa)
- Water Supply for Cooling (40 PSI / 276 kPa)
- Water Drain
- 220 Volt, 50/60 Hz, 25 Amp electrical power supply

Specifications

Size	66 × 36 × 32 inches (168 × 92 × 82 cm)
Weight	1,400 lbs (635.6 kg)
Crated Size	74 × 44 × 40 inches (188 × 112 × 102 cm)
Crated Weight	1,600 lbs (726.4 kg)
Temperature Controller	Digital PID, 1° Resolution
Pressure Indicator	100 PSI (690 kPa) Resolution; High and Low Pressure Alarms
Slurry Cup	150 RPM Rotational Speed; 316 Stainless Steel; Expansion Chamber

Model 100:

Maximum Temperature: 400°F (204.4°C)

Maximum Pressure: 25,000 PSI (172,375 kPa)

Model 120:

Maximum Temperature: 600°F (315.5°C)

Maximum Pressure: 40,000 PSI (275,800 kPa)

Components

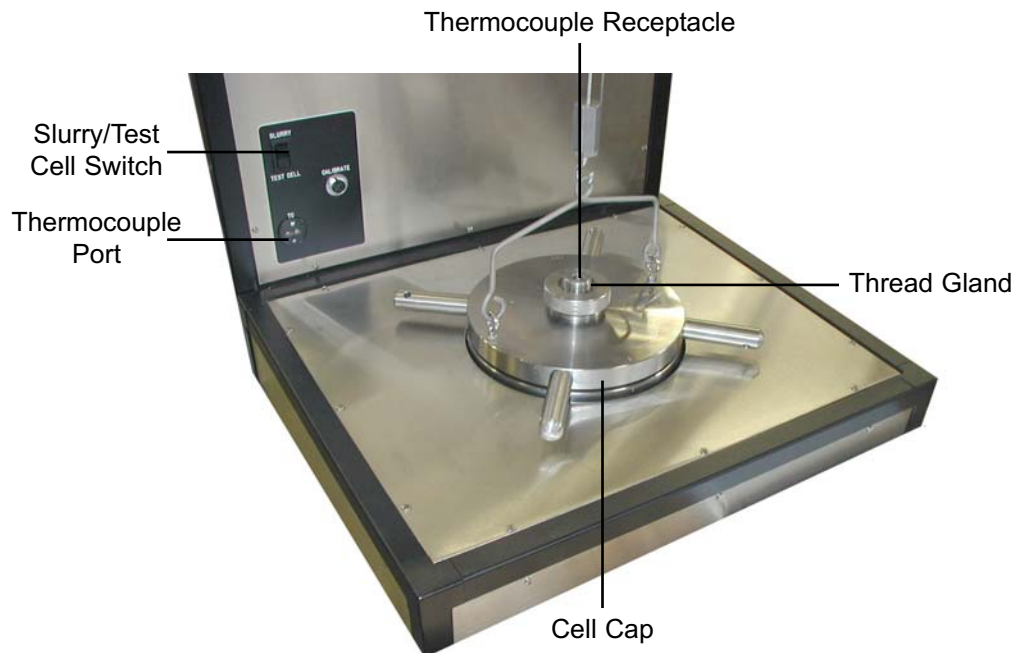
#120-00-5	Graphic Recorder
#120-147	Autoclave Mag Drive
#120-201	Test Cell Thermocouple
#120-202	4000-Watt Heater
#120-628	Potentiometer Assembly:
#120-602	Calibration Spring
#120-603	Potentiometer Body
#120-604	Potentiometer Resistor
#120-605	Contact Spring
#120-606	Potentiometer Contact Arm
#120-607	Contact Strip
#120-608	Grounding Cable Retaining Screw
#120-609	Grounding Contact Spring
#174-13	Motor
#120-00	Model 100 HTHP Consistometer; 25,000 PSI; 400°F; Single Cell; 115V:
#120-001	Mineral Oil; 1 Gallon; Qty: 9
#120-102	Rupture Disk; 28,000 PSI
#120-208	Slurry Cup Thermocouple
#120-401	Metal O-rings; Qty: 2
#120-519	Slurry Cup Assembly
#171-11	O-ring for 100-mL Back Pressure Receiver; 100ML; Qty: 4
#120-10	Model 120 HTHP Consistometer; 40,000 PSI; 600°F; Single Cell: 220V:
#120-001	Mineral Oil; 1 Gallon; Qty: 3
#120-101	Release Valve; 60,000 PSI; Qty: 2
#120-103	¼" Autoclave-Type Rupture Disk; 45,000 - 50,000 PSI; Prebulged
#120-104	Rupture Disk; 17,500 PSI
#120-204	Heater Gasket
#120-206	2500-Watt Heater
#120-521	Slurry Cup with Extension
#122-076	1-Amp Fuse; ¼" × 1¼"; Qty: 3
#122-094	30-Amp Solid State Relay; Qty: 2
#120-01	Spare Parts for #120-00:
#120-001	Mineral Oil, 2 Gallons
#120-102	Rupture Disk (28,000 PSI), Qty: 2
#120-202	4000-Watt Heater
#120-204	Heater Gasket, Qty: 2
#120-208	Slurry Cup Thermocouple, Qty: 2
#120-401	Metal O-ring, Qty: 6
#120-501	Slurry Cup Sleeve
#120-502	Molded Diaphragm, Qty: 25
#120-503	Paddle Pin, Qty: 12
#120-504	Pivot Bearing, Qty: 6
#120-505	Pivot Bearing Gasket, Qty: 5

#120-506 Paddle for Slurry Cup Assembly, 4.25" Long × 2.81" Wide, Qty: 4
 #120-507 Paddle Shaft for Slurry Cup Assembly, 7.75" Long × 0.25" Wide, Qty: 10
 #120-508 Diaphragm Retaining Ring, Qty: 2
 #120-509 Drive Disc for Slurry Cup Assembly, 0.75" OD, 0.25" ID, 0.25" Thick, 303 Stainless Steel
 #120-510 Drive Bar for Slurry Cup Assembly, 1.25" × 0.50", 303 Stainless Steel
 #120-511 Slurry Cup Shear Pin, Qty: 24
 #120-512 Slurry Cup Drive Pin, Qty: 12
 #120-513 Slurry Cup Gasket, Qty: 6
 #120-514 Drive Disk Set Screw, 6-32 × 3, Stainless Steel, Qty: 10
 #120-519 Slurry Cup Assembly, No Expansion Cap
 #120-602 Calibration Spring, Qty: 3
 #120-604 Potentiometer Resistor, Qty: 4
 #120-606 Potentiometer Contact Arm, Qty: 6
 #120-607 Contact Strip, Qty: 6
 #120-608 Grounding Cable Retaining Screw, 10-32 × 1/2 SHCSSS
 #120-684 Large Bronze Bearing, Qty: 2
 #122-072 1-Amp Fuse, 5 mm × 20 mm, Qty: 5
 #122-073 2-AMP Fuse, 5 mm × 20 mm, Qty: 5
 #130-75-28 1/16" Allen Key, 1.75" Long, Qty: 2

#120-11 Spare Parts for #120-10:

#120-001 Mineral Oil, 2 Gallons
 #120-103 Autoclave-Type Rupture Disk, 45000 - 50000 PSI, Prebulged, 1/4", Qty: 2
 #120-202 4000-Watt Heater
 #120-203 Slurry Cup Thermocouple, Qty: 2
 #120-204 Heater Gaskets, Qty: 2
 #120-401 Metal O-rings, Qty: 10
 #120-501 Slurry Cup Sleeve
 #120-502 Molded Diaphragm, Qty: 25
 #120-503 Paddle Pin, Qty: 12
 #120-504 Pivot Bearing, Qty: 6
 #120-505 Pivot Bearing Gasket, Qty: 5
 #120-506 Paddle for Slurry Cup Assembly, 4.25" Long × 2.81" Wide, Qty: 4
 #120-508 Diaphragm Retaining Ring for Slurry Cup Assembly, Qty: 2
 #120-509 Drive Disc for Slurry Cup Assembly, 0.75" OD, 0.25" ID, 0.25" Thick, 303 Stainless Steel
 #120-510 Drive Bar for Slurry Cup Assembly, 1.25" × 0.50", 303 Stainless Steel
 #120-511 Slurry Cup Shear Pin, Qty: 24
 #120-512 Slurry Cup Drive Pin, Qty: 12
 #120-513 Slurry Cup Gasket, Qty: 6
 #120-514 Drive Disk Set Screw, 6-32 × 3, Stainless Steel, Qty: 10
 #120-520 Paddle Shaft, 9/8", Qty: 10

#120-521 Slurry Cup with Extension
#120-602 Calibration Spring, Qty: 3
#120-604 Potentiometer Resistor, Qty: 4
#120-606 Potentiometer Contact Arm, Qty: 6
#120-607 Contact Strip, Qty: 6
#120-608 Grounding Cable Retaining Screw, 10-32 × ½ SHCSSS
#120-684 Large Bronze Bearing, Qty: 2
#122-072 1-Amp Fuse, 5 mm × 20 mm, Qty: 5
#122-073 2-Amp Fuse, 5 mm × 20 mm, Qty: 5
#130-75-28 1/16" Allen Key, 1.75" Long, Qty: 2



Setup

Consistometer



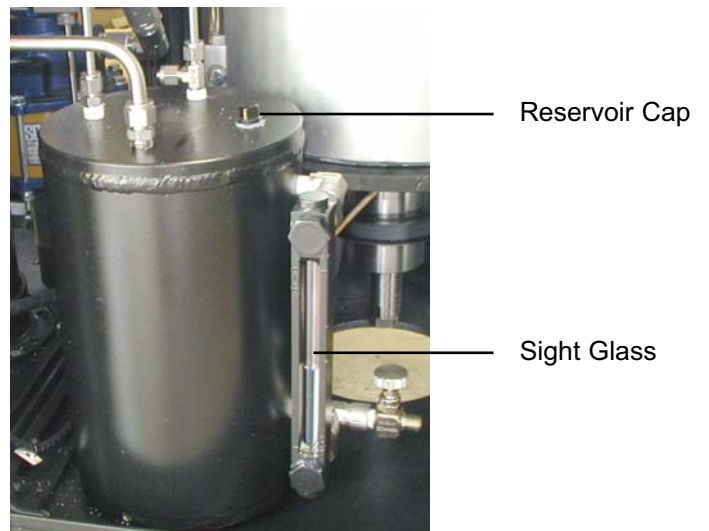
1. Carefully remove the instrument from the wooden crate.
2. Once the unit is in place, lock the casters by depressing the lever on the side. This will prevent the unit from moving.
3. Connect an air or nitrogen (100 - 150 PSI / 690 - 1,035 kPa) supply to the air supply on the back of the instrument.

This unit uses ¼" NPT female connectors for all supply lines.

4. Connect the drain and coolant supply lines, also on the back of the unit.



5. Make sure all electrical switches are turned off and the unit is grounded. Make the necessary electrical connections in accordance with local codes.
6. To fill the oil reservoir, open the front cabinet door and remove the oil reservoir cap. Using a funnel, pour approximately four liters (or until full) of mineral oil into the reservoir. Replace the cap. Make sure the seal is air tight. Use the sight glass on the side of the reservoir to check the oil level.



7. Periodically inspect the oil level within the air line lubricator. This unit is located just upstream of the air inlet on the hydraulic pump inside the Consistometer cabinet. You can access it by opening the cabinet doors on the back of the unit. If the oil level is low, refill it with mineral oil.

The lubricator has been adjusted at the factory. Under normal operation, one drop of oil should be discharged into the air stream every 12 to 20 pump strokes. This discharge can be observed through the clear control needle on top of the lubricator. If adjustment is necessary, turn the hex screw on top of the control needle until you observe normal discharge. Rotate the screw clockwise to decrease the oil flow rate and counter clockwise to increase it.



Control
Needle Air Line
Lubricator

Setup

Chart Recorder



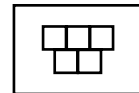
The OFITE HTHP Consistometer includes a Eurotherm Chessell 6100V chart recorder for displaying and recording test data. It features a removable drive for easily transferring test data to a PC for processing. The unit is setup to automatically record data onto the disk during the test. However, for this feature to work, you must have the disk inserted into the drive when the unit is powered on. Otherwise, the data must be manually archived at the end of the test.



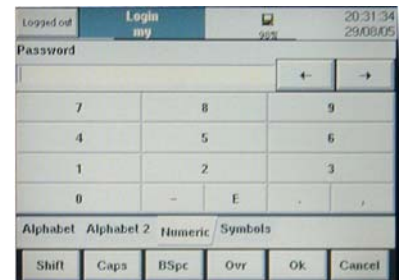
It is strongly recommended that you carefully study the Eurotherm Chessell 6100V instruction manual before using this equipment.

To manually archive test data:

1. Press the “Menu” button.
2. Press “Operator” from the menu.
3. At the top of the screen, press “Security” and then choose “Log In”.
4. You will then be prompted for a UserID. Touch the UserID field and choose “Engineer” from the list.
5. Now touch the “Password” field. At the bottom of the screen, choose “Numeric” as the input method and then type “100” and press “OK”.
6. At the top of the screen, choose “Archive” and then choose “Local”.

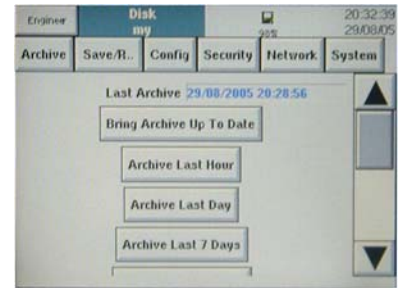


Menu Button



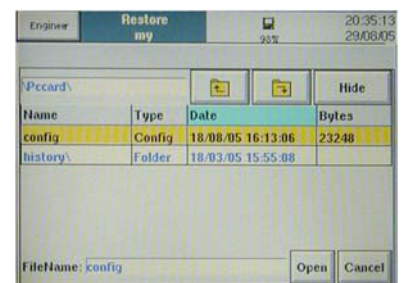
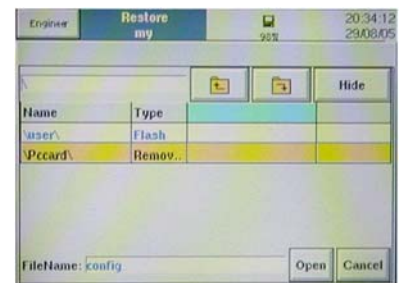
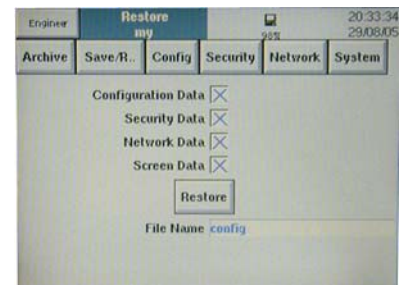
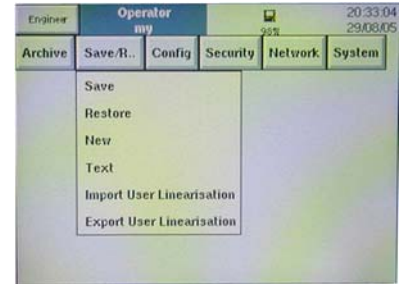
- Now choose the data you wish to archive and press the appropriate button.

When the archive process starts, you will see a green light at the top, right-hand side of the screen. When the archive is complete, you will see a message saying “Demand Archive Finished”.



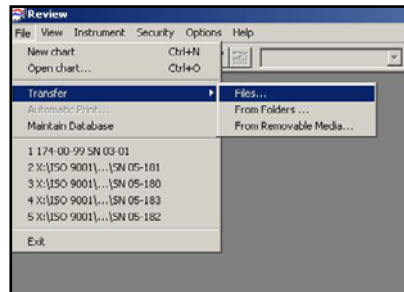
The chart recorder is shipped to you with a pre-programmed configuration file. **It is highly recommended that you do not change any of these settings.** However, in case of emergency, it is possible to restore your configuration from the disk that is shipped with the unit.

- Log in as “Engineer” as described in steps 1 through 5 above.
- At the top of the screen, press “Save/Restore” and choose “Restore”.
- Make sure all four options are selected, then touch the “File Name” field.
- Press the up arrow to access the root directory.
- Select “mediacard” and press the down arrow to access the disk.
- Choose the file titled “config” and press “Open”.
- When the progress bar at the top of the screen stops, the restore process is complete.



To transfer the test data to a PC:

1. If the Eurotherm software has not already been installed on the computer, install it from the disk provided with the Consistometer.
2. Remove the disk from the chart recorder and insert it into the appropriate drive on the PC.
3. From the Start Menu, select “Programs” then “Eurotherm” and then click “Review”. This will open the Eurotherm Review software application.
4. From the “File” menu, select “Transfer” and then click “Files”.



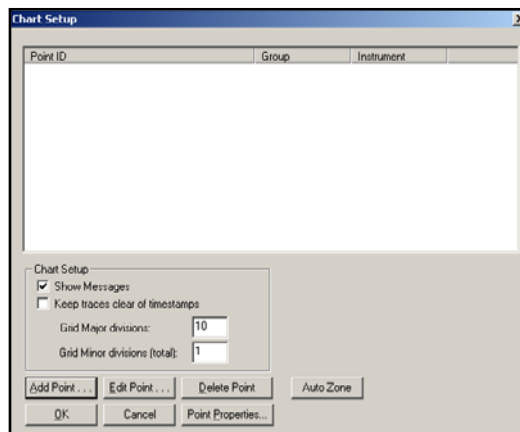
5. Click the “Browse” button, then choose the appropriate drive for your removable media. Open the “History” folder and select the files you wish to transfer.

6. Type a name in the “Name” field and click “OK”.

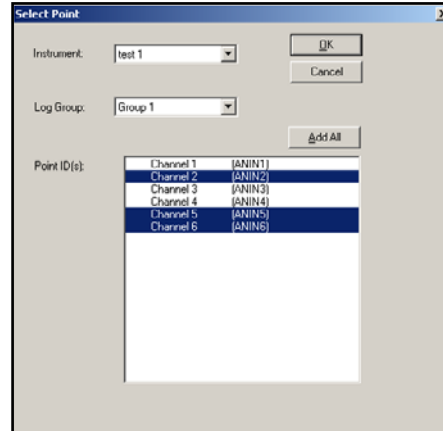
At this point you will receive a warning message. Click “OK” again.

7. When the file transfer is complete, go to the “File” menu and click “New Chart”.

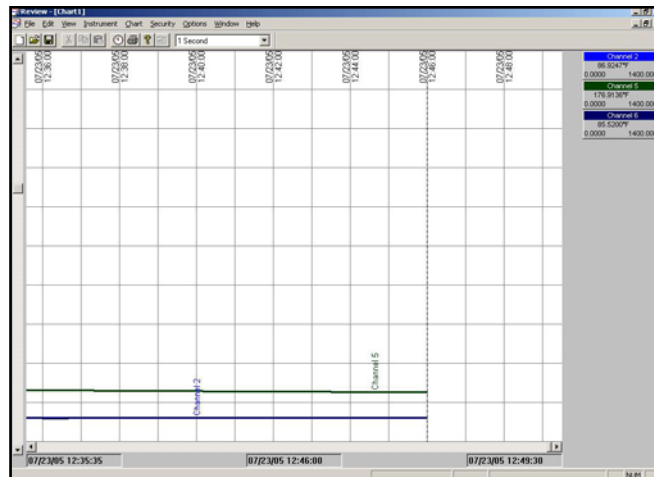
8. Click “Add Point”.



9. From the “Instrument” drop-down menu, choose the name you selected in step 6.
10. Choose “Group 1” from the “Log Group” menu.
11. Now, select the Point IDs you wish to display on the chart. Hold down the “CTRL” button to select more than one. Click “OK”.



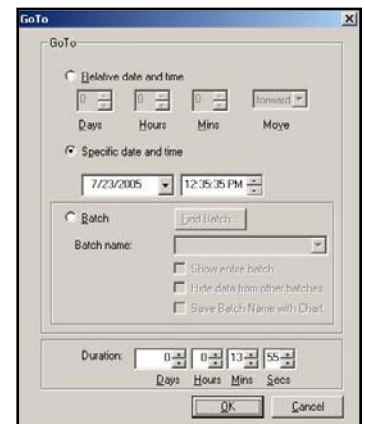
12. The software will now create the chart based on the data collected from the test.



13. To jump directly to a specific data point, click the “Go To” button at the top of the screen. Choose the data point you wish to view and click “OK”.



Go To



Setup

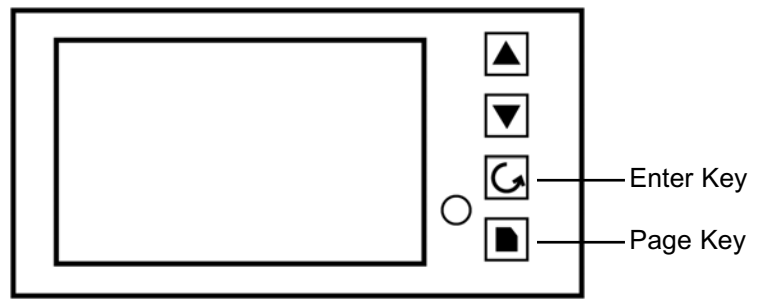
Pressure Indicator

The pressure indicator not only shows you the current pressure, but it also alerts you when the pressure rises above the value you set. During an alarm condition, the heater, pump, and motor will automatically shut down.

The display shows the current pressure in KPSI. This means a reading of 12.501 indicates a pressure of 12,501 PSI.

To set the high-pressure alarm:

1. Press the “Page” button until the display reads “AL”.
2. Press the “Enter” button until the display reads “1FSH”.
3. Press the up and down arrows to set the high-pressure setpoint.



Pressure Indicator

Setup

Temperature Controller

The Eurotherm Model 2404 Temperature Controller is the most important component of the temperature control system and it is strongly recommended that operators carefully study the Model 2404 instruction manual included with the Consistometer.

If a test requires a custom program, it is important to build and save the program prior to creating the slurry and loading the slurry cup.

Below is an example that illustrates how to program the controller. In this example, the target temperature is 150°C, which is obtained at a rate of 2.5 degrees per minute. The target temperature of 150°C is maintained for the duration of 180 minutes (3 hours), after which you want to stop the heat.

Press the “Page” button until the display reads “ProG List.” Use the scroll button to decide which setting to change. Use the arrow buttons to change the values for that setting.

For the test described above, you will want the following settings:

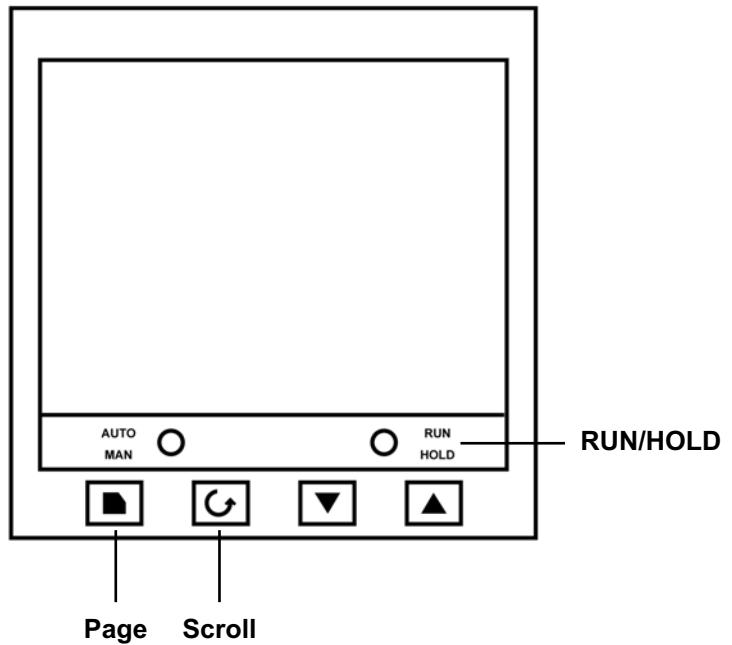
<u>ProG List</u>	<u>Setting</u>	<u>Explanation</u>
Seg	1	(segment 1)
Type	rmp.r	(ramp rate - other choices include ramp time and dwell)
Tgt	150	(final temperature)
Rate	2.5	(rate per minute)
Segm	2	(segment 2)
Type	Dwell	(holds the temperature for the amount of time chosen for Dur below)
Dur	180	(duration time)
Segm	3	(segment 3)
Type	end	
End.t	sop	

To run the test, push and hold the “Run/Hold” button until the light for Run turns on. To stop the test, push and hold the “Run/Hold” button until the light for Run and Hold both turn off. Be sure and turn the “HEATER” switch off as well.

The temperature controller utilizes a high alarm setpoint which will bring the unit to an alarm condition if the temperature ever exceeds the set value. This value is defaulted to 200°C or 400°F, but can be programmed to different values.

An alarm condition will also occur if the slurry thermocouple is unplugged.

Temperature Controller



When an alarm condition occurs, the unit will automatically stop the heater, motor, and pressure pump, the "ALARM" switch will light up red, and the "TEMPERATURE CONTROLLER" will display "1FSH". If the "SONALERT" switch is turned on, the unit will start to beep. If the alarm condition is resolved, the heater and pressure pump will automatically be turned back on.

Setup

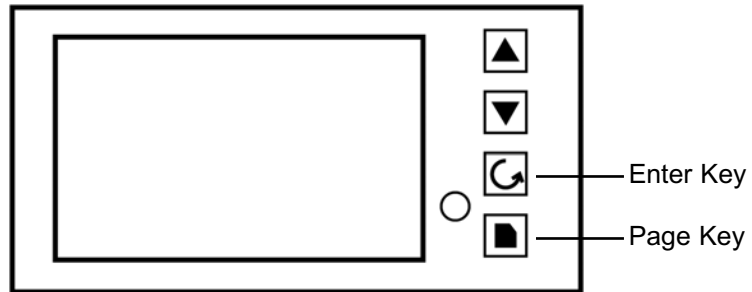
Potentiometer Indicator

The HTHP Consistometer includes a built-in Eurotherm 2408i 15V Potentiometer Indicator. As the slurry cup rotates within the unit, the potentiometer creates a small voltage charge, which is displayed on the indicator. This charge increases as the strength of the slurry increases.

The potentiometer indicator features a high-voltage alarm. When the charge reaches the specified level, an alarm condition is triggered and the heater, pump, and motor are automatically shut off.

To change the alarm setting, perform the following steps:

1. Push the "Page" key twice. The display will read "AL".
2. Push the "Enter" key. The display will read "IFSH".
3. Push the up arrow key once to read the current setting.
4. Push the up or down arrow keys to change the setting.
5. After choosing the appropriate setting, press the "Page" key three times to return to the original display.



Operation

Filling the Slurry Cup

1. With the slurry cup disassembled, examine the threads on the inside of the cylinder. The end with the larger set of threads is the top.
2. Coat the surface of the paddle and the inside of the slurry cup with a high-temperature grease to facilitate cement removal.
3. Insert the paddle assembly all the way into the top of the cylinder.



Cylinder



Paddle

4. Slide the slurry cup lock ring on top of the paddle assembly with the two notches facing upward. Tighten the locking ring completely using the provided slurry cup tool.



Bottom Cell Cap

Metal O-ring



Locking Ring

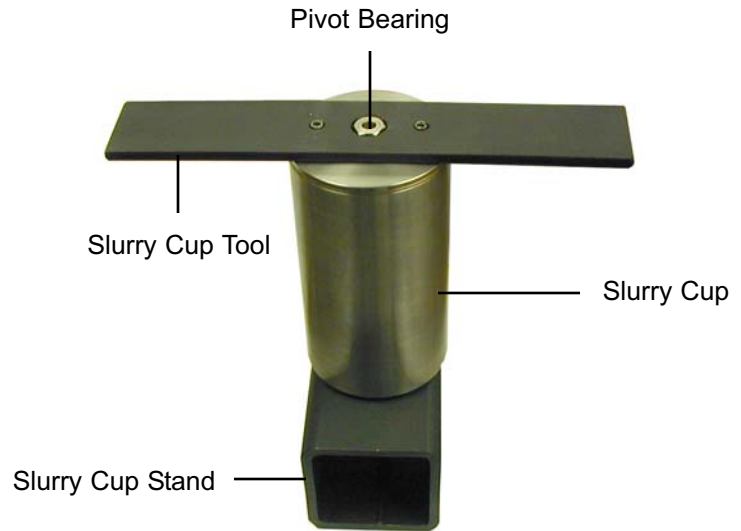
5. Prepare the cement slurry as stated in API Specification 10.
6. Pour the cement into the slurry cup through the open bottom of the cylinder.
7. Place the metal o-ring around the threads of the bottom cap. Apply high-temperature grease to the o-ring and cap surface. Screw the cap onto the cup and tighten with the slurry cup tool.



Note

The slurry cup should contain enough cement slurry that it leaks out of the hole in the center of the cap. If it is not, remove the cap and refill the slurry cup. Do not add cement through the hole in the cap.

8. Screw the pivot bearing into the hole in the center of the cap and tighten.
9. Wipe the entire slurry cup clean to ensure that no cement remains on the outside.



Operation

Loading the Test Cell



Tip

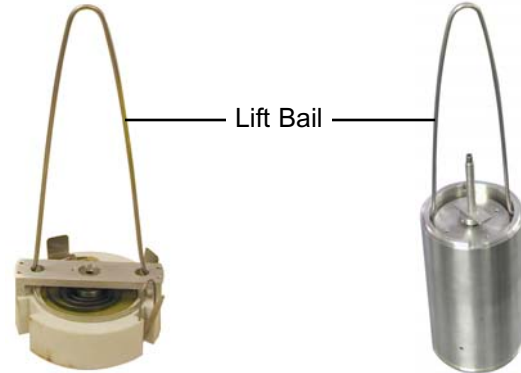
Before attempting to load the test cell, ensure that the “Air To Cylinder” and “Pressure Release” valves are completely closed (turned clockwise). Also, make sure the “Motor”, “Pump”, and “Heat” switches are turned off.

1. Lower the slurry cup into the test cell ensuring that the slurry cup drive pins engage the drive holes at the bottom of the test cell.

It may be necessary to start the motor briefly to confirm that the slurry cup is properly aligned inside the test cell.

2. Lower the potentiometer mechanism into the test cell ensuring that the contact springs of the potentiometer are in alignment with the test cell contacts.

The slurry cup and potentiometer both have two holes near the top for the lift bail (provided). Use the lift bail to easily lower the slurry cup and potentiometer into the test cell.



Slurry Cup Drive Holes



Potentiometer Contacts

3. To engage the drive bar of the slurry cup into the potentiometer, rotate the cup with the motor for a few seconds while applying slight pressure to the potentiometer. Note that if the unit is in an alarm condition the motor will not engage.
4. Choose an o-ring for the cell cap and place it into the test cell in the o-ring groove. Place the cell cap onto the cell and hand tighten.

Two o-rings are available for the cell cap. The rubber o-ring is easier to use, but is not suitable for tests involving high temperature or pressure. The metal o-ring is more durable, but requires extra attention when tightening the cell cap.

If you are using a metal o-ring for your test, be very careful when you tighten the cell cap. Tightening the cell cap flattens the o-ring. If you tighten the cell cap to a certain point for one test, but do not tighten it as much for the next test, the seal will leak and the test will not provide accurate results. Once you have tightened the cell cap, mark the test cell and cell cap so that you know how much to tighten it for the next test. It is recommended that you hand-tighten the cell until it is close to the mark, then use a rubber mallet to gently tap the cell cap into position. This will ensure that you do not accidentally over-tighten.

If you tighten the cell cap past the marked position, you must make a new mark and refer to it for the next test.

5. Plug the thermocouple into the port on the side of the unit. Insert the thermocouple into the hole in the top of the cell cap and tighten the thread gland finger tight. Then loosen it 1/8 of a turn.
6. Turn on the air supply.
7. With a 5/8" wrench handy, turn the "Oil Reservoir Valve" to "Fill Cell". The test cell will begin to fill with mineral oil from the reservoir below. Carefully watch the top of the test cell. When oil begins leaking out of the thermocouple hole, tighten the thread gland with the wrench. This will ensure that no air remains within the test cell.
8. Turn on the "Motor" and "15 VDC" switches. Switch the "Slurry/Test Cell" switch to "Slurry".

This switch determines which temperature the temperature controller will display. If the switch is set to "Slurry", it will show the temperature of the cement slurry via the thermocouple in the cell cap. If it is set to "Test Cell", it will show the temperature of the test cell body, via the thermocouple inside the cabinet.



Important



Note



Tip

9. Turn on the pump. Adjust the pressure to the desired level by turning the regulator clockwise. When you reach the test pressure, turn off the pump.

If the pressure rises too high, open (counter clockwise) the “Pressure Release” valve very slowly. Close the valve immediately to prevent all of the pressure from leaking.

10. Turn the heat on and push the “Run” button on the temperature controller.
11. Turn the “Timer” switch on and push the “R” reset button on the timer display.

The timer displays elapsed time to the nearest tenth of a minute. If an alarm condition occurs, the timer will stop. This is a troubleshooting measure that shows you the point during the test at which the alarm occurred.

The “Timer” switch provides power to the timer and the “R” reset switch resets the timer to zero.

12. If the “Alarm” switch is not already on, turn it on now. If the “Alarm” switch is left off, the unit can still enter into an alarm condition, but there will be no visual or audio signal to notify the operator.

Operation

Completing the Test



Important



Tip

1. When the test is complete, press and hold the “RUN/HOLD” button on the temperature controller until the “Run” and “Hold” lights are both off.
2. Turn off the “Heat” and “15 VDC” switches and turn on the “Cool” switch. Make sure the water supply is turned on.
3. As the test cell cools, watch the pressure carefully. As long as the temperature is over 180°F (82.2°C), make sure the pressure is at least 1,000 PSI (6,900 kPa).
4. Once the test cell has cooled, turn off the “Cool” and “Motor” switches.
5. Open the Pressure Release valve (counter-clockwise) all the way.

Always release the pressure very slowly to prevent damage to the equipment.

6. Slowly turn the “Oil Reservoir Valve” to “Vent”.
7. Open the “Air To Cylinder” valve (counter-clockwise). Air pressure will force the oil back into the reservoir. You will hear a hissing sound as air is released. When the hissing sound stops, close the valve (clockwise).
8. Carefully unscrew and remove the thermocouple.

Keep a rag or paper towel handy in case extra oil leaks from the cell.
9. Unscrew and remove the cell cap. Remove the potentiometer and slurry cup.
10. Return the cell cap to the test cell to prevent dust and other material from entering the cell. Close all valves and turn off all switches.

Maintenance

Cleaning

Slurry Cup

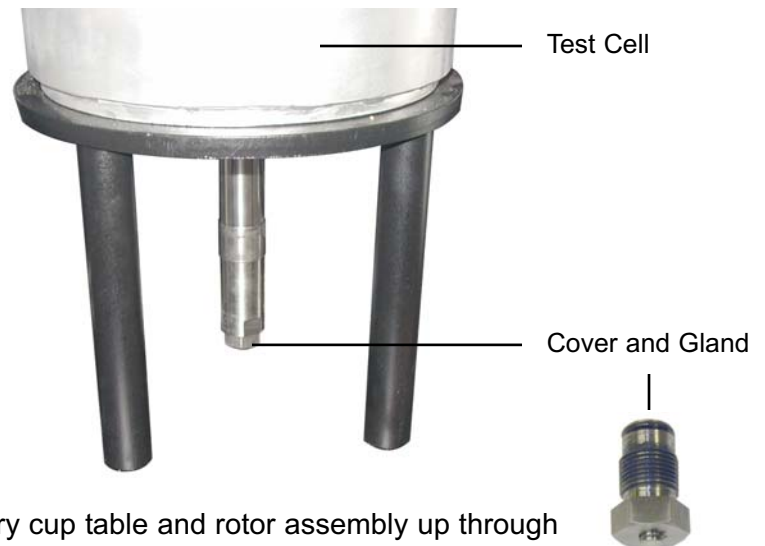
After every test, immediately disassemble the slurry cup and clean it thoroughly with soap and water. Be sure to remove any residual cement before it hardens. Hardened cement on any of the parts can cause irreparable damage.

Magnetic Drive

After every test, examine the inside of the test cell for any cement or other debris. If necessary, wipe the inside of the cell with a rag or paper towel.

It is recommended that you periodically flush the test cell with mineral oil to clean out any contaminants that may have collected over time.

1. Make sure all switches are off and all valves are closed.
2. Open the test cell and remove the slurry cup and potentiometer if they are still in place.
3. Locate the cover and gland beneath the test cell and remove them.



4. Pull the slurry cup table and rotor assembly up through the test cell opening.
5. Clean any abrasive particles from the rotor assembly and lay the assembly on a clean, flat, non-magnetic surface.
6. Place a pail or bucket underneath the test cell. Flush the test cell and magnetic drive with mineral oil. Use a soft-bristle brush to remove any debris.



Rotor Assembly

Rotor Assembly with
Slurry Cup Table

7. Thread the slurry cup table onto the rotor shaft assembly.

Pour a small amount of mineral oil into the vessel. This will act as a cushion when inserting the rotor assembly.

8. Insert the rotor assembly into the drive housing. Press down on the slurry cup table until it falls into place.
9. Replace the cover and gland underneath the test cell before beginning another test.

Maintenance

Potentiometer Calibration

The potentiometer should be calibrated once a month to ensure accurate readings.

1. Place the potentiometer on the calibration stand. Place the stand on the edge of the Consistometer and plug it into the port on the side of the unit.
2. Connect the wire clamps to the contacts. From the groove going clockwise around the unit, connect yellow, then black, then blue.
3. Slide the weight into the groove and wrap the cord clockwise around the unit one full turn.
4. Let the cord hang over the wheel and off the table.
5. Attach the hook to the cord.
6. Apply the weights to the hook according to the chart below. Steady the cord to minimize the amount of swinging.

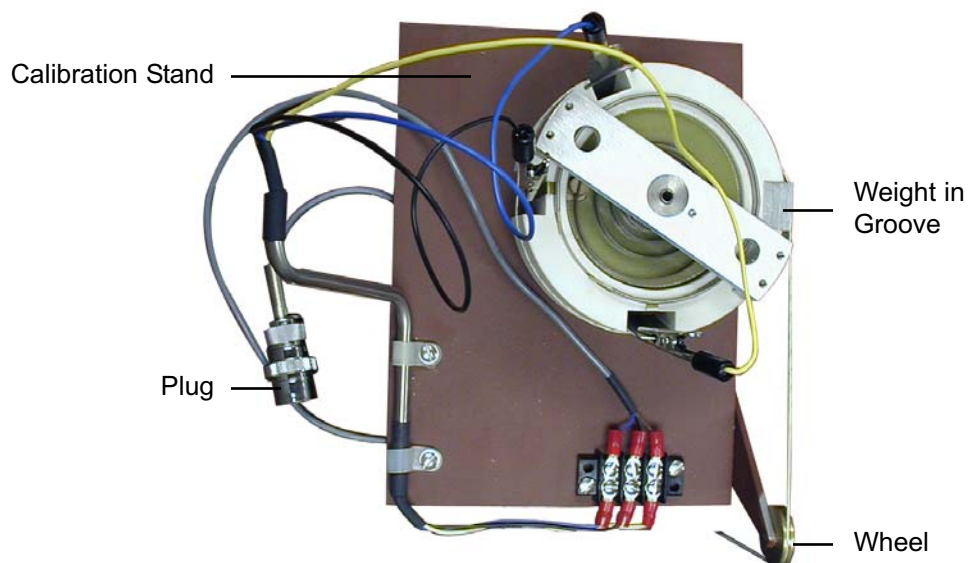
When adding weights, remember that the hook weighs 50 grams.

Therefore, to test the potentiometer at 200g, you only need to add 150g to the hook.

7. Firmly tap the surface of the calibration stand with a pen or the blunt end of a screwdriver to settle the weights and stabilize the potentiometer.



Note



8. Lift the weight about two inches directly upward and release it. Allow it to fall straight down. Observe the reading on the Potentiometer Indicator.
9. Record the reading and repeat steps 6 through 8 with each weight listed in the chart below.



Note

The voltage values in this chart are only examples. Every potentiometer is different and will, therefore produce different voltages. The calibration process will help you interpret the potentiometer readings provided by the Consistometer.

A 400 g weight corresponds to approximately 100 Bc.

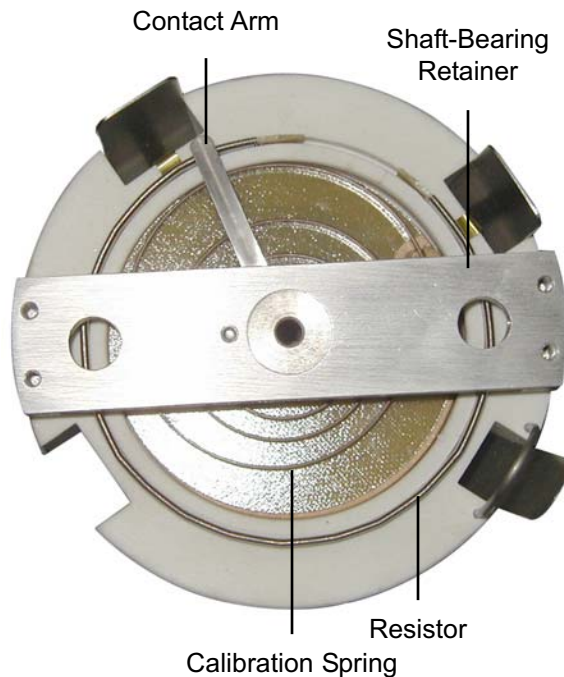
Mass (grams)	Approximate Voltage
100	2.5
200	5.5
300	8.2
400	10.75

Maintenance

Potentiometer

1. The potentiometer should be kept as clean as possible. Periodically submerge the unit in solvent to remove cement and other materials.
2. Troubleshooting potential problems:
 - a. If consistency (voltage) readings fluctuate, examine the resistor and verify that the top is smooth and consistent. If necessary, re-insert the resistor and lightly smooth the resistor wire with emery cloth.
 - b. If the consistency (voltage) reading is zero, the resistor and contact arm may have lost contact. Adjust the contact arm either up or down. If this does not correct the problem, the resistor may have sufficient space between the windings to prohibit conductance. If this is the case, replace the resistor.
 - c. If the potentiometer will not hold a calibration, the spring is probably either damaged or worn by corrosion. Replace the spring.
3. To install a new resistor:
 - a. Remove the four small screws holding the shaft-bearing retainer to the potentiometer assembly.
 - b. Remove the contact arm.
 - c. Carefully lift the damaged resistor away from the potentiometer. Clear the resistor groove of any foreign material.
 - d. Carefully place the new resistor into the groove and ensure that it is centered between the two terminating contacts.
 - e. Push the resistor completely into the groove with either a mallet or a piece of wood. It is very important to ensure that the resistor is completely inserted into the groove and that the upper surface is level.
 - f. Install a new contact arm and if necessary, bend the arm either up or down to obtain consistent contact with the resistor.
 - g. Re-install the shaft-bearing retainer and calibrate the potentiometer before use.
4. To install a new calibration spring:
 - a. Remove the contact arm and the shaft-bearing retainer.
 - b. Carefully lift the calibration spring from the potentiometer assembly.

- c. Install the new spring. When properly installed, it should tighten when the center shaft is rotated counter-clockwise.
- d. Install a new contact arm and make adjustments as necessary to obtain consistent contact with the resistor.
- e. Loosen the three adjustment screws on the underside of the potentiometer assembly and rotate the spring adjuster until the spring rests at a relaxed state.
- f. Ensure that the contact arm aligns with the contact strip and tighten the three set screws.
- g. Rotate the center shaft to ensure that the spring does not bind or rub the potentiometer housing.
- h. Replace the shaft-bearing retainer and calibrate the potentiometer.



Maintenance

Troubleshooting

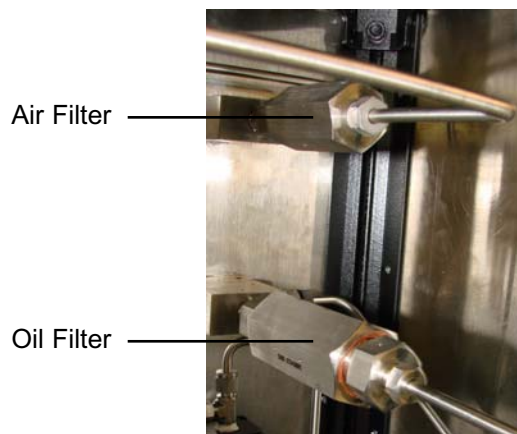
If you hear the pump running but no pressure is building in the test cell:

1. Make sure the “Pressure Release Valve” is completely closed.
2. Make sure the “Air to Cylinder” valve is completely closed.
3. Make sure the “Fill Cell” valve is set to “Fill”.
4. The Consistometer has a rupture disk to prevent damage due to overpressurization. If the pressure inside the cell exceeds 28,000 PSI, the disk will rupture and release the pressure. If this happens, the cell cannot be pressurized until the rupture disk has been replaced.

The rupture disk is located inside a square block just upstream from the filter on the inlet side of the pump. To replace the rupture disk, remove this block, discard the ruptured disk, and install a new disk. Then re-install the block into the plumbing line.

When a test is complete, it should take several minutes to drain the test cell of oil. If it takes more than an hour to completely drain the cell, the oil filter between the cell and the reservoir may be dirty.

1. Locate the oil filter near the top of the unit cabinet in the back. There are two hex-shaped fittings. The smaller one on top is the air filter. This one should never need maintenance. The larger one on bottom is the oil filter.
2. Before removing the fitting, observe the direction arrow on the side. This will be important later when re-installing the filter.
3. Carefully disconnect the pipe from the hex fitting.
4. Remove the filter pieces from the hex fitting.





5. Clean the pieces of the filter with compressed air. This will blow out any dirt and debris.
6. Carefully place the filter pieces back inside the fitting in the same order in which they were removed.
7. Reconnect the fitting to the plumbing.

Make sure the directional arrow is pointing the same direction as before the fitting was removed. Installing the filter backwards could damage the equipment.

If the oil filter between the cell and the reservoir is dirty, it could mean that the oil in the reservoir is also dirty. Observe the oil through the sightglass on the front of the reservoir. If the oil is cloudy, it should be replaced.

1. Make sure all pressure is released from the system and that the cell is open.
2. Make sure the "Fill Cell" valve is set to "Vent".
3. Remove the reservoir cap.
4. On the back of the reservoir, inside the cabinet, is a drain valve. Place a container underneath the drain and open the valve.
5. When the reservoir is empty, close the drain valve.
6. Using a funnel, pour approximately 4 liters of mineral oil into the reservoir. When full, the oil level in the sight glass should be about 1" from the top.
7. Replace the reservoir cap. Make sure the seal is tight.



If the unit enters an alarm condition, the motor, pump, and heater will all be stopped automatically. Also, if the “SONALERT” is turned on, an audible alarm will sound.

The three controllers on the unit can cause an alarm: pressure, temperature and 15 VDC. Check the display on each of the three controllers. The one that caused the alarm will display “1FSH” or “Sbr”.

Always address an alarm condition immediately. Failure to do so could result in damage to the equipment or even operator injury.

If an alarm condition appears to be in error, follow these steps to diagnose the problem:

1. Compare the reading on the three controllers to the three readings on the chart recorder. If any of the three controllers shows a significantly different reading than the chart recorder, there may be a problem with the devices or the wiring. Make sure all devices are working and are properly connected to each other.

2. Check the following, based on which controller is causing the alarm:

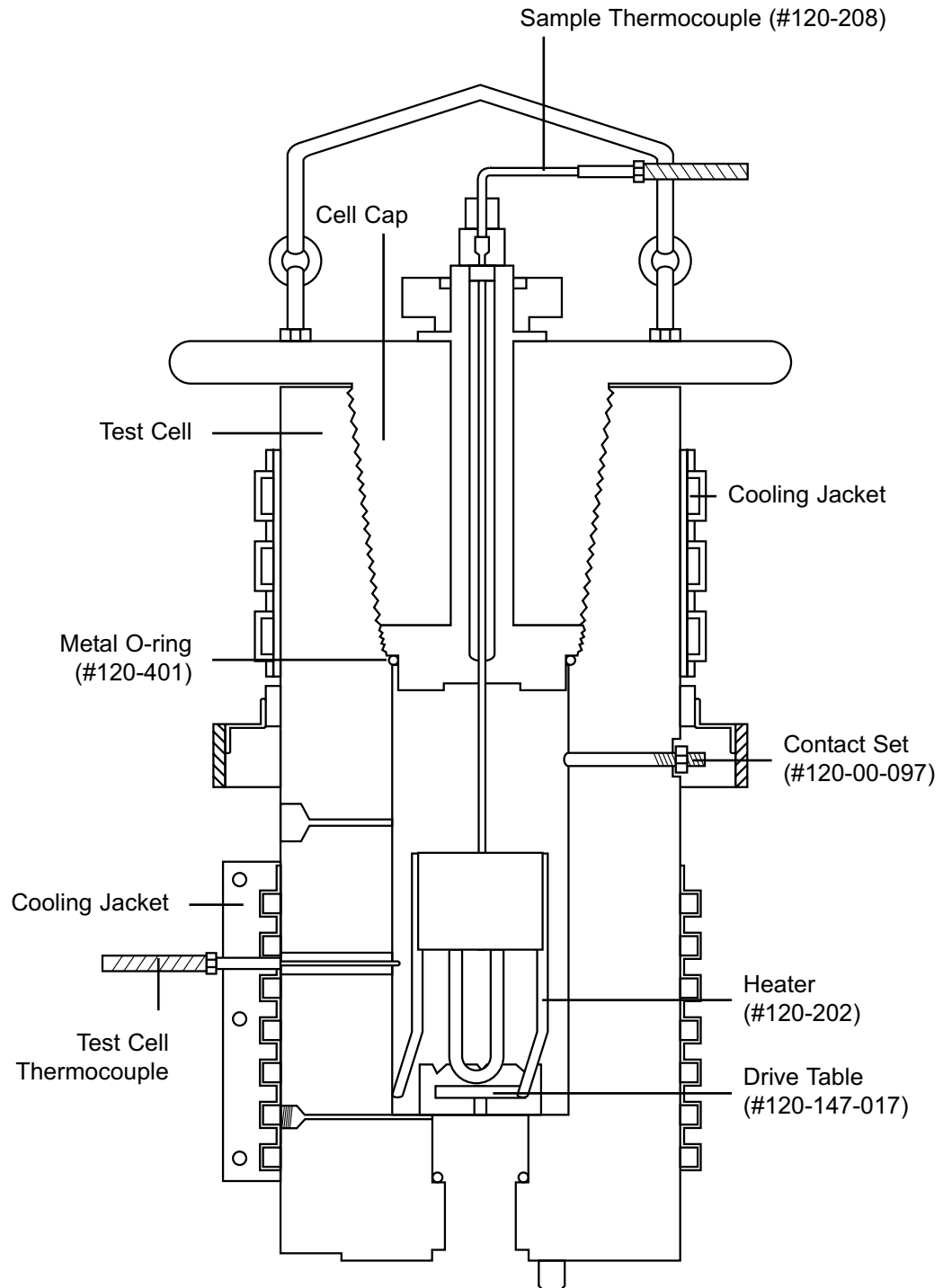
- Temperature: Make sure the thermocouple is plugged securely into the jack on the unit cabinet.
- Pressure: Open the panel on the side and locate the shunt. The shunt has three positions: out, middle, and in. If it is either out or in (not middle), the controller will report the maximum pressure, causing an alarm. Make sure the shunt is in the middle position.

Also, check the cable connection to the transducer inside the cabinet. Make sure it is screwed firmly into the transducer.

- 15 VDC: Make sure the potentiometer is installed correctly inside the test cell. The orientation of the electrical contacts must match the nodes on the inside of the cell.
3. Check the alarm setting on the controller. If the alarm is set too low (for example: if the temperature alarm is set to 32°F), the unit will always be in an alarm condition. Refer to the documentation for each controller for further instructions.

Appendix

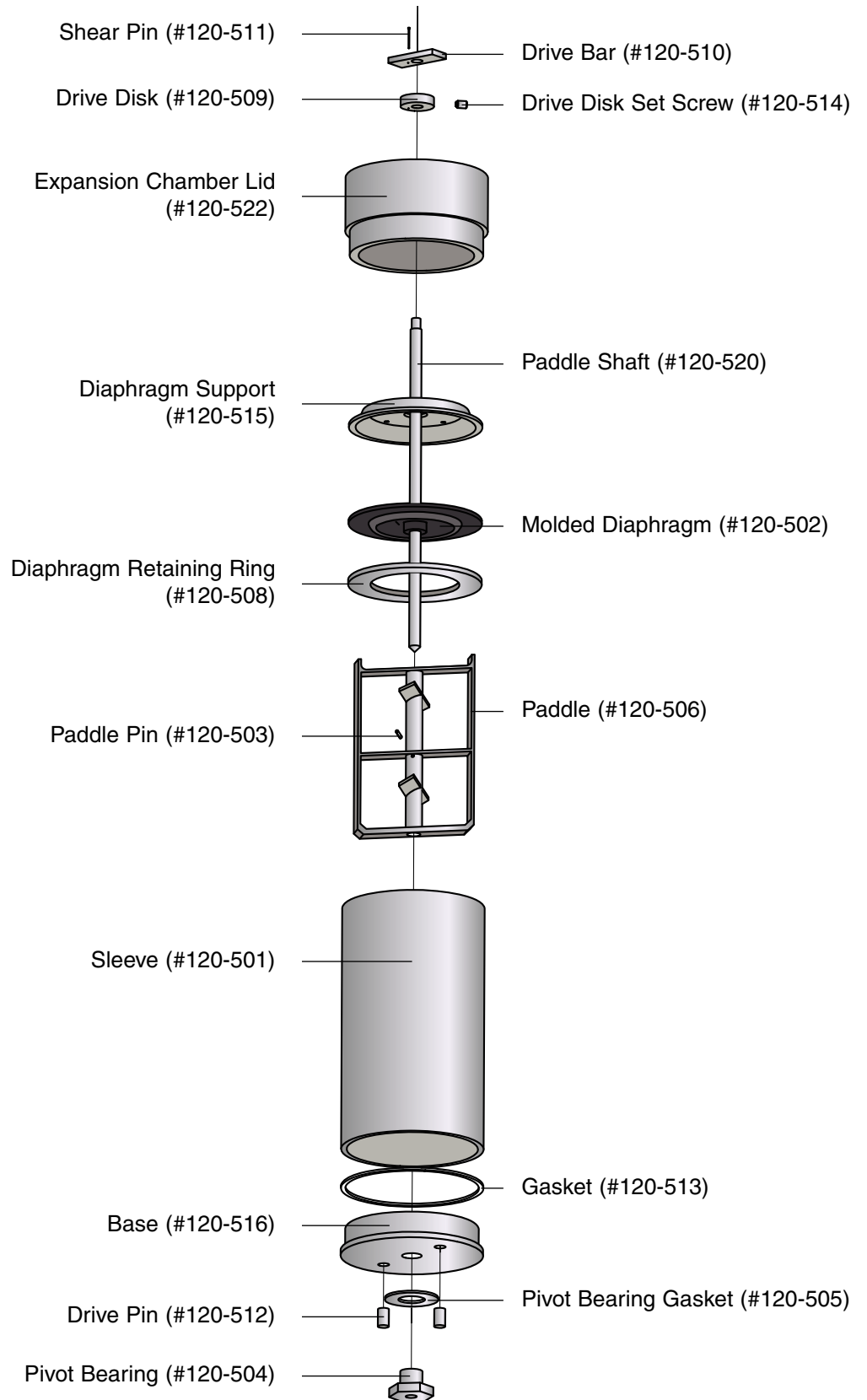
Cell Diagram



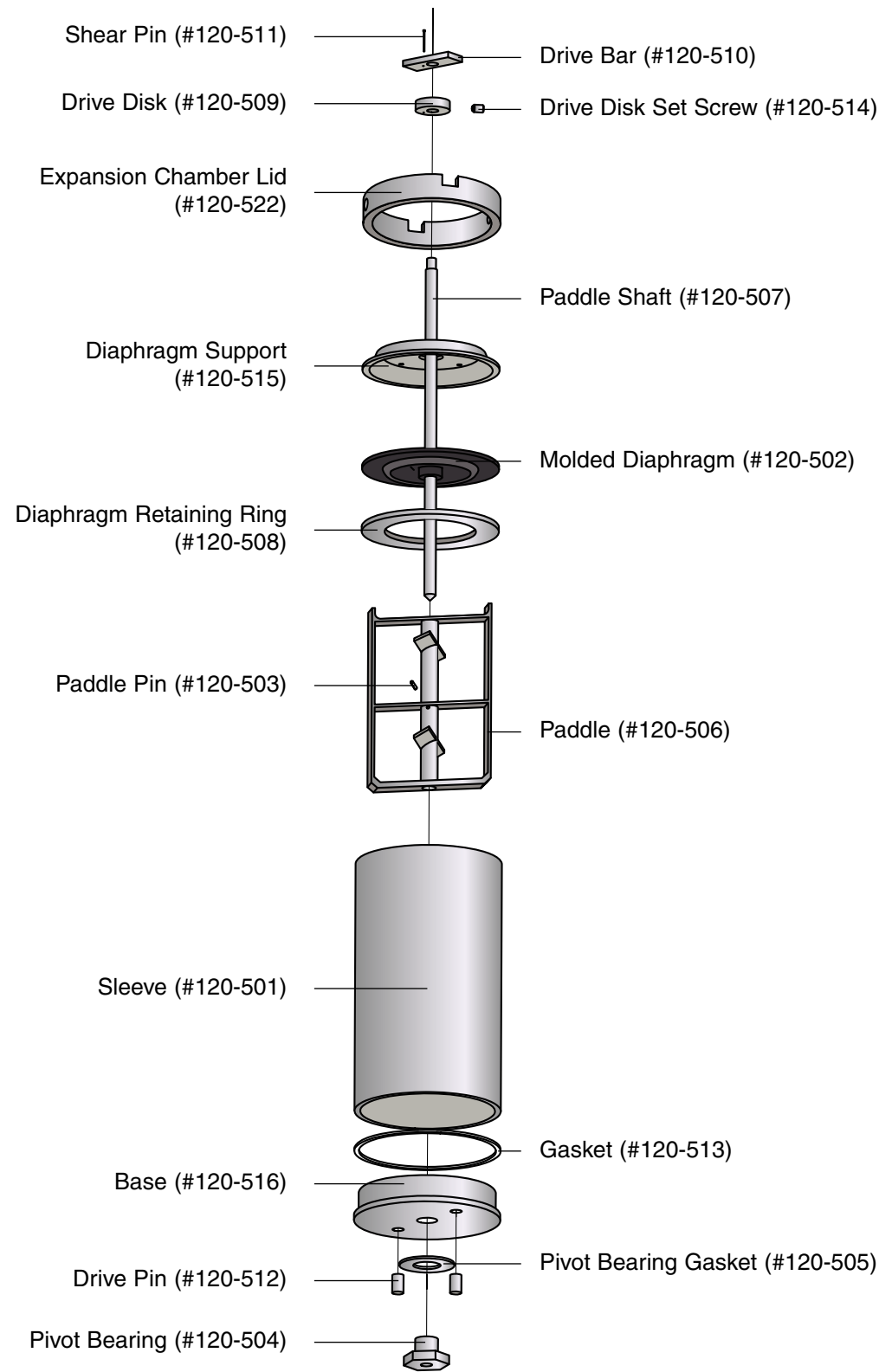
Appendix

Slurry Cup Diagram

#120-521 Slurry Cup Assembly With Expansion Chamber

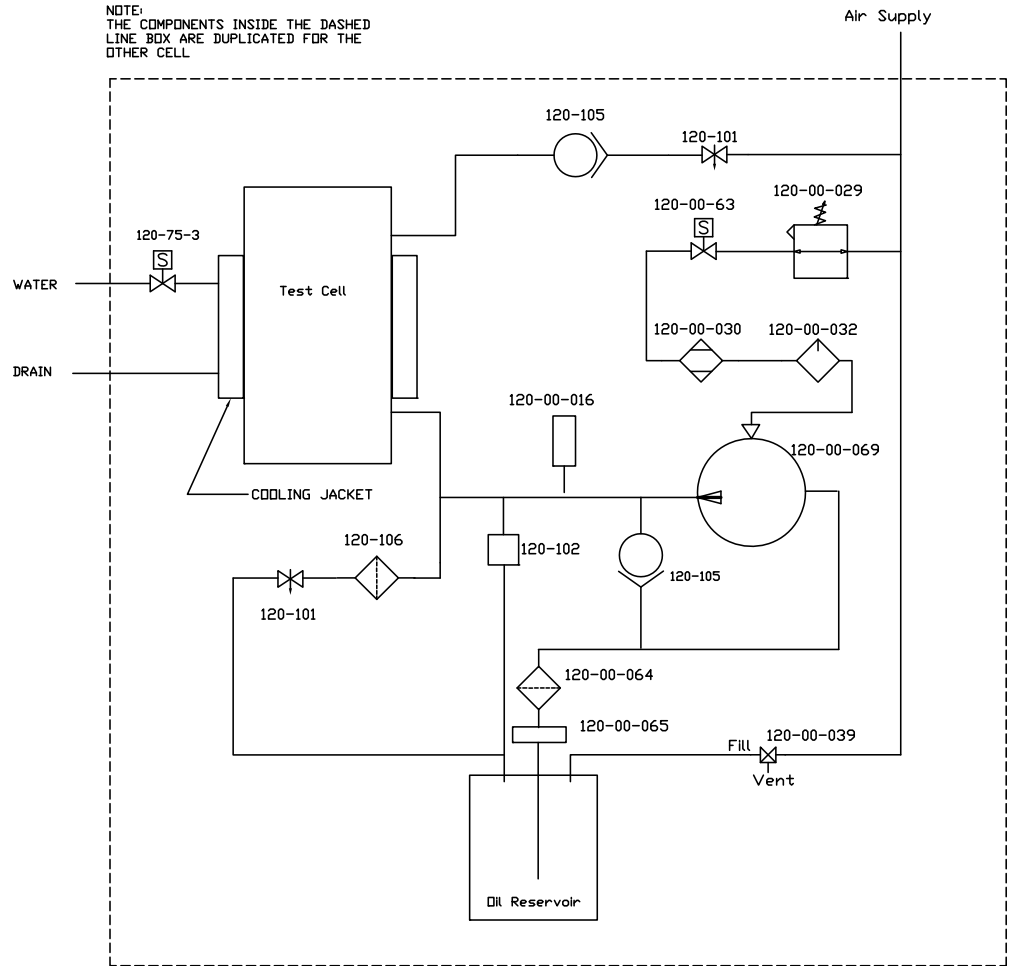


#120-519 Slurry Cup Assembly Without Expansion Chamber



Appendix

Plumbing Diagram



- 120-00-016 - Pressure Transducer
- 120-00-029 - Air Regulator
- 120-00-030 - Air Filter
- 120-00-032 - Lubricator
- 120-00-039 - Three way Valve
- 120-00-063 - Air Solenoid Valve
- 120-00-064 - Hydraulic Dil Filter
- 120-00-065 - Filter Head
- 120-00-069 - Pump
- 120-101 - Pressure Relief Valve
- 120-102 - Rupture Disk
- 120-105 - High Pressure Check Valve
- 120-106 - High Pressure Filter
- 120-75-3 - Water Solenoid Valve